



IH Collectors Missouri Chapter #1



Fall 2015

In This Issue

- Presidents Message
- Where We Are
- Membership Secretary
- Wanted/For Sale
- Get Well/Deepest Sympathies
- Upcoming events
- Recipe Corner
- Editor's Corner
- Show Book Order Forms
- Truck Order Forms

Officers & Directors

President

Andrew Dawson
30164 Nashville Avenue
MACON MO 63552-4219
660-346-0319
ihctractors@yahoo.com

Vice-President

Norman Williams
1210 S Washington Street
MEXICO MO 65265-2457
573-473-7811
williamsjan@sbcglobal.net

Secretary

James Mitschele
29220 N Hwy 133
RICHLAND MO 65556-7869
573-765-4530
tanaarlene@msn.com

Treasurer

Randy Weiss
1467 State Road JJ
STOUTLAND MO 65567-9299
h/417-286-3015
c/417-718-8408
randy.weiss5921@gmail.com

Presidents Message

Hard to believe summer is over and winter is on its way! We have been lucky this fall with great weather which has gave everyone a good chance to get their crops out, a lot better than what we had this spring.

Last week I just returned from the 2015 IHCC National Auction in Fredrick, MD. They had a great auction with about 80 tractors, many implements and of course lots of memorabilia. Chapter #39 did a great job and I am looking forward to the auction next year in Litchfield, MN.

We had a great turn out for the chapter meeting August 15th at my house in Macon. We had about 80 members present and had a great catered meal provided Special D Meats of Macon. We held elections at the meeting for three director positions and the location of the 2017 state show. The three directors with terms expiring were Tom Lindley, John Wolfe and myself. Tom had decided not to run again and those nominated were Rob Goodding and Greg Harrell. Directors elected were Rob Goodding, Greg Harrell and myself. I would like to thank Tom Lindley and John Wolfe for their years of service to the board. The location for the 2017 state show was between Platte City and Montgomery City, with the final vote going to Montgomery City. A big thank you to everyone that helped get everything ready!

Our next membership meeting and Christmas dinner will be Saturday, December 5th, at the Pilot Grove Community Center in Pilot Grove, MO. There will be a directors meeting at 10:30 we will eat at 12:00 and meeting at 1:00 please RSVP by November 28, 2015 if you plan to attend (660)346-0319, watch for signs

This has been a great year for Chapter #1 and it would have not been possible without so many great members. I would like to wish everyone a Merry Christmas and a Happy New Year! Hope to see everyone in Pilot Grove.

Andrew

Where We Are

I have had several members tell me that they would love to see the state map with all the counties and a way to show how many members we have in each county. This is something that has seen in the Alabama newsletter and even though it took a little time to compose the info, I agree that it is a nice addition to our newsletter. I will try to keep this updated for each newsletter as our club continues to grow. Hope you all enjoy seeing where our fellow members live throughout the state. For those members out of the state, I have not figured out how to include you yet, however, I am working on something.

Membership Secretary
Amy Perkins
780 County Road 128
CLARK MO 65243-9236
573-289-5442
perkinsfarm05@hotmail.com

Chapter Historian
Miles Wolfe
8740 Georgetown Drive
PILOT GROVE MO 65276-2721
660-834-5133

Merchandise Chairperson
Penni Weiss
1467 State Road JJ
STOUTLAND MO 65567-9299
h/417-286-3015
c/417-718-7997
rpweiss@missouricom.com

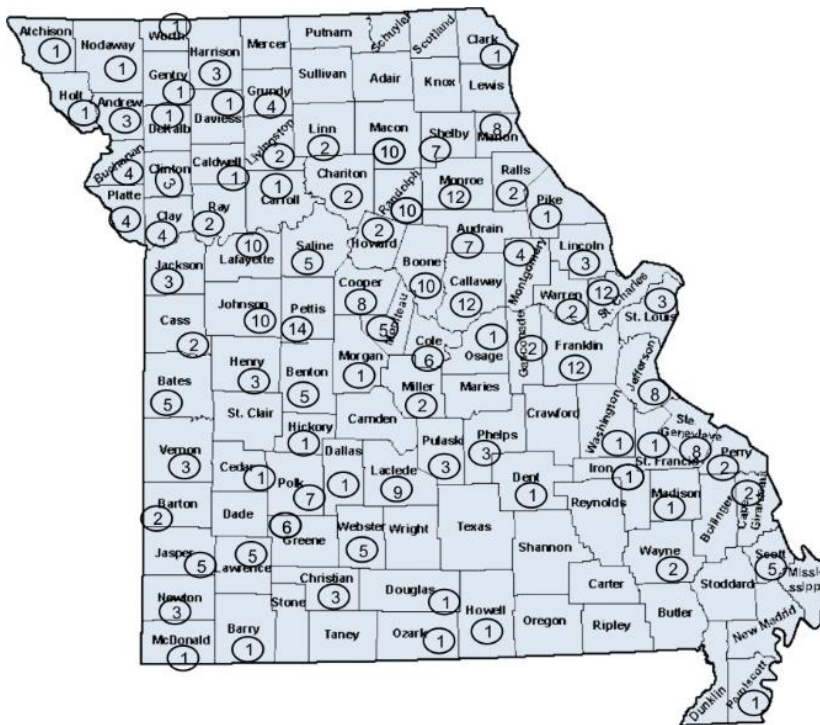
Director
John Wolfe
4205 State Road H SE
FAUCETT MO 64446-7101
816-253-9445

Director
Tom Lindley
12874 Birch Road
PHILLIPSBURG MO 65822-9017
417-589-6309
tandmlindley@yahoo.com

Director
Paul Cummings
P O Box 112
AMSTERDAM MO 64723-0112
660-267-3304
grandpasmt@ckt.net

Director
Ron Strange
32409 E Colburn Road
OAK GROVE MO 64075-7279
816-697-2141
rsbigred@centurylink.net

Director
Ron Gann
4402 Highway TT
ODESSA MO 64076-9512
h/816-633-4376
c/816-263-4376
rgann@centurylink.net



Membership Secretary

Well fall is starting to approach us and time for the light jackets to come out of the closet. With most of the shows done for the year maybe everyone will finally get some relaxation before the New Year starts with new shows to have fun and memories at.

We currently have 358 active members. Remember that Membership is from January 1st to December 31st. In just a few months it will be time to renew again for the 2016 year. Hope to see everyone at our next meeting and Christmas Dinner in December at Pilot Grove.

If you shall need any help with membership, feel free to contact me at 573-289-5442.

Amy Perkins
780 County Road 128
Clark, MO 65243
perkinsfarm05@hotmail.com

Wanted/For Sale

Wanted: Tinware for No. 3 Ball Bearing cream separator. Contact Bud Werner at 573-471-3840 or shnjwerner@netscape.net
Send all items for sale or that are wanted to ihcc1news@gmail.com or mail to 311 S Center, Shelbina, MO 63468

Visit the Chapter 1 Website
at www.showmeihc.com

Websites

National International Harvester Collectors Club, Inc.

The National International Harvester Collectors Club provides a worldwide collector's network for the preservation of history, products, literature and memorabilia of the International Harvester Company.

<http://nationalihcollectors.com/index.html>

International Harvester Collector's Club Chapter #1

The Missouri Chapter of the International Harvester Collectors was formed in 1992. The chapter's goals mirror those of the national club, i.e., to preserve the heritage of the international Harvester Company.

<http://showmeihc.com/index.php>

Contact Us

Editor

Bert Smith

311 S. Center
Shelbina, MO 63468
573-231-6871

ihcc1news@gmail.com

With Our Deepest Sympathies and Get Well Soon

It is with our deepest sympathies that we regrettably inform every one of the passing of our chapter family, family members.

On Saturday, September 19, Richard and Jean Racker's lost their son Kevin R. Racker. Kevin left behind, his parents, wife Dana and two sons: Zeb and Zack, a sister, two brothers, and several nieces and nephews.

On Tuesday, September 22, Membership Secretary Amy Perkins, members Mike & Kathy, and Joey Perkins lost Kathy's mother Mary Belle Bailey. Mary left behind her daughter Kathy, two daughter-in-law's, 5 grandchildren, 14 great-grandchildren, and 13 great great-grandchildren.

We would like to send out wishes of fast healing to member and Harvester Highlights Editor, Darrel Darst, who had knee replacement surgery in August. Wishing Larry Meservey, who had heart trouble in September, good health. We also would like to wish fast healing to James Mitchele who had knee replacement surgery in just last week.

Upcoming Events

Mark your calendars for these great upcoming events. If you have an event in your area that you would like to add please send to me.

November, 2015	December, 2015	January, 2016
26 – Thanksgiving Day	5 – Fourth Quarter Meeting/Christmas Dinner – Pilot Grove Community Building, Watch for Signs. Directors Meeting at 10:30, Meal at noon, Members Meeting 1 p.m.	1- Happy New Year's
	12 – Toy Show, Cairo, MO High School. Contact Rob Goodding at 660-651-5783	
	25- Merry Christmas	
	31 – New Year's Eve	

Recipe Corner

I find a lot of enjoyment looking through old cookbooks and trying new recipes. I have had the opportunity to look through several of the *International Harvester Refrigerator Recipes* and the Irma Harding cookbook that came with the freezers and refrigerators. I would like to share some of these recipes with you throughout several of the newsletters. Remember if you have a family favorite recipe that you would like to share with everyone, please email to ihcc1news@gmail.com or mail to 311 South Center St., Shelbina, MO 63468

****Mark the National Dates****

2016

March 17-19, 2016
Winter Convention - O'Fallon, IL
Hosted by Southern Illinois Chapter 32. For more information contact Judy at 618-977-8778 or judyabe43@gmail.com

June 16, 17, & 18, 2016
RED POWER ROUND
UP Racine County Fairgrounds Union Grove, WI Hosted by IHC Chapter #4 of Wisconsin.
Contact Randy Graf at 262-939-5660 or RPRU2016@gmail.com

October 15, 2016
National Auction –
Litchfield, MN
 Hosted by Minnesota
 Chapter 15
2017
March 2-4, 2017
Winter Convention -
Columbus, IN
 Hosted by Indiana
 Chapter 7
June 15, 16, & 17, 2017
28th National Red
Power Round Up at
 state fairgrounds in Des
 Moines, Iowa
November 3-4, 2017
National Auction –
Wauseon, OH
 Hosted by Ohio
 Chapter 6
2018
June 13-16, 2018 RED
POWER ROUND UP
 Garrett Coliseum,
 Montgomery, AL
 Hosted by IHC Chapter
 #23 of Alabama.

Refrigerator Rolls

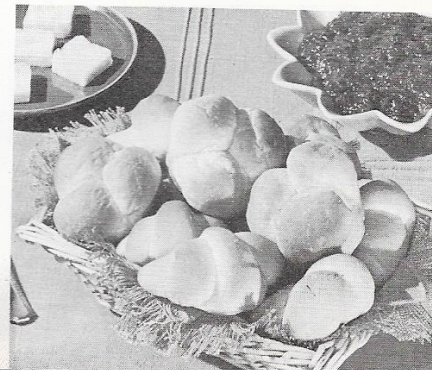
It is a particular advantage to have refrigerated dough for fresh rolls when entertaining or if the family is small and cannot use a full recipe at one time.

Almost any yeast roll may be refrigerated three to four days satisfactorily. However, the recipe should contain plenty of yeast and sugar. When ready to use, the dough may be formed into rolls of any desired shape or into coffee cake. Refrigerating the dough at from 40°F. to 50°F. retards yeast activity. The surface of the dough must be greased and tightly covered to prevent drying and the formation of a hard crust.

REFRIGERATOR ROLLS

2 cakes yeast	¼ cup sugar
¼ cup lukewarm water	½ cup shortening
1 cup milk	3 eggs, beaten
1½ teaspoons salt	5 cups sifted flour (about)

Soften yeast in lukewarm water. Scald milk. Add salt, sugar and shortening and cool to lukewarm.



13

Add 2 cups flour and beat well. Add yeast and eggs. Blend thoroughly. Add remaining flour to make a soft dough. Turn out on lightly floured board and knead until satiny. Place in lightly greased bowl, cover and let rise in warm place (80° to 85°F.) until doubled in bulk. Punch down, form into smooth ball. Grease the surface lightly, cover and put into refrigerator. To use, remove dough from refrigerator and punch down. Mold at once in any desired shape, Or, if preferred, let dough stand in warm room for an hour, punch down and mold. Place in greased pans and let rise until doubled in bulk. Bake in moderately hot oven (425°F.) 15 to 20 minutes. Yield: about 2½ dozen rolls.

Editor's Corner

If you have not ordered your show book do so now. They are printed and have been mailed. It's not too late to order your book now they would make a great Christmas Gift.

Where has the rest of the summer gone? It's hard to believe that it is already November and this year is almost over. Things have been crazy, my son started college at Missouri Welding Institute in Nevada, MO.

Since our last meeting, the last of the summer was a blur. My dad is home and doing great from his surgery back in August. School has started, was able to send one day at Boonville during their show, and had Nemo Old Threshers show in September.

Look forward to things hopefully slowing down a little this winter, not that I am looking forward to winter. Give me 70's years round. Look forward to seeing everyone in Pilot Grove and hope that you all have a great Merry Christmas and Happy New Year's.

Bert

**Follow us
on
Facebook
at
International
Harvester
Collectors
Missouri
Chapter 1**

Story from /about Members

We would like to ask members to send us their stories. These can be about restoring a family tractor, a family IH business, etc. To submit your story and pictures email to ihcc1news@gmail.com.

For those who were not able to see all the front page stories that were ran during the RPRU in the Sedalia Democrat. Here is one of the stories, I will be sharing the other three stories with you.



Tim Epperson photos | Democrat

Rob Goodding, of Cairo, Mo., puts stalks of corn in a husker-shredder Thursday at the International Collectors Club Red Power Roundup at the Missouri State Fairgrounds in Sedalia.

Corny demonstrations delight onlookers

Farmers give husker-shredder, corn sheller, hammer mill demonstrations

By Leah Wankum and Tim Epperson
lwankum@civitasmedia.com
tepperson@civitasmedia.com

Demonstrations are a staple to the International Collectors Club Red Power Roundup every year. The machines change every year, but this year, spectators encircled two particular demonstrations, both of which involved corn: the husker-shredder and a couple of hammer mills.

Rob Goodding, a farmer from Cairo, Missouri, and International Harvester member, owns all four machines required to run the husker-shredder demonstration: the husker-shredder, which he estimated was manufactured in the early to mid-1940s, a sheller built in 1921, and two tractors, a 1931 "Regular" McCormick Deering Farmall and a 1927 McCormick Deering Model 15-30.

"It's basically just like a stationary corn

TODAY'S TRACTORS

For today's International Collectors Club Red Power Roundup schedule, see page 7A.

picker, like a threshing machine," Goodding said. "Most people are familiar with a threshing machine that threshes wheat."

Goodding and Mark Manville, another farmer from Edgerton, Mo., hooked up the husker-shredder to the 1927 tractor and the sheller to the 1931 tractor in order to run the machines. Goodding said the husker-shredder takes the ear of corn off of the stalk, the shucks were ground up and stored in barn lofts to be used for feeding livestock, and then the corn was either ground or shelled for feed as well. But before all that could happen, the corn has to get picked first.

"You cut the corn with the binder and it binds it up in bundles, puts a string around it," Goodding said. "And then you store shocks, usually in the field, and then in the fall they would come and



Rob Goodding demonstrates his husker-shredder for onlookers at the International Collectors Club Red Power Roundup at the Missouri State Fairgrounds in Sedalia.



Mark Manville, of Edgerton, assists Rob Goodding in the operation of the husker-shredder.

take the shredder and take the ears off, and the ears come out one side."

Goodding brought seven or eight machines to the Roundup, including a hay press, or stationary hay baler, and another baler with a pick-up attachment which picked hay up in the field

but still required four men to operate it.

While most farmers have switched over to combines, Goodding said the Amish community still uses the same machines from the demonstrations. He said he's

See CORNY | 7A



After the ears of corn are husked, they are dropped onto a conveyor belt.

Tim Eggeperson photos | BROWNSVILLE



Kernels of corn are dropped into the chute of a hammer mill to be ground into corn meal.



Darrell Foster, of Illinois, dumps a basket of corn into a corn sheller machine which removes kernels of corn from their cobs to further process into cornmeal.



Darrell Foster tries to unclog a hole for the kernels of corn drop down.

Corny

From page 1A

given demonstrations for the past three Roundups.

"I like to show my machines running and how they work," he said.

Manville said this is his first year helping out with the demonstration.

"(The corn) was shocked last fall by a corn binder," he said. "It's just a bundle of corn with twine on it. (Gooding) lays that up there with the ends facing off it and feeds it in. (The husker-shredder) takes the stock off, the debris and the ears. And everything else is run through here."

Manville also pointed out the hammer mill demonstrations, which grind corn up into smaller pieces for other types of feed.

A Kansas couple and their granddaughter sat in the shade of their golf cart while observing the demonstrations. Charles and Tammy Smith, from Horton,



Darrell Foster, of Illinois, dumps a basket of corn into a corn sheller machine, which removes kernels of corn from their cobs to further process into cornmeal.



Different blades are used to vary the consistency of corn into corn meal.

brought 7-year-old Hailey Bunc to the Roundup for her first time. Tammy said she thinks the demonstrations are interesting.

"This is my fourth time, so I get educated all the time as well,"

Tammy said. "(My husband) is a farm boy, so he kind of explains things to me. You learn a lot about how hard the farmers work. It probably makes me appreciate farmers more."



The ears of corn then drop through a shoot into a bushel basket.



Russel Foster uses a hammer mill to process kernels of corn into cornmeal.

Darrell Foster demonstrated a corn sheller for the audience at the fairgrounds. The ears of corn are dropped into

the machine which was built in the 1940s, and it removed the kernels of corn from their cobs so they can be further

milled into cornmeal using a hammer mill.

"These smaller machines were often used by smaller farms to mill their own corn meal. The larger processing companies have industrial machinery that mills the corn. These do the trick, though," Foster said.

Foster's son, Darrell demonstrated the hammer mill for the audience at the Red Power roundup. The event continues today.

Leah Wankum can be reached at 660-826-1000 or @leahwankum.

BACK TO OUR ROOTS

26th Annual



June 10-13, 2015
Sedalia, Missouri

Order yours
today, they are
going fast!

Return this portion with your payment

2015 RPRU SHOW BOOK ORDER FORM

NAME _____

STREET _____

CITY, STATE, ZIP CODE _____

PHONE NUMBER _____

E-MAIL ADDRESS _____

NUMBER OF BOOKS ORDERED RED AT \$35.00 each (includes shipping) _____

TOTAL PAID \$ _____ CHECK NUMBER _____

PLEASE SEND ORDER FORM AND CHECK MADE PAYABLE TO RPRU 2015

TO:

RANDY & PENNI WEISS
1467 STATE ROAD JJ,
STOUTLAND, MO 65567

e-mail: rpweiss@missouricom.com Tel. 417-286-3015

2015 RED POWER ROUNDUP OFFICIAL SHOW TOY ORDER FORM



1:25 SCALE DIECAST METAL D2 INTERNATIONAL PICKUP

QTY	Body Color	Price	Total
	GREEN	\$50.00 EACH	
	RED	\$50.00 EACH	
	PAIR**	\$90.00 PAIR	
*PLEASE ADD \$6.00 SHIPPING PER TOY <i>(US shipping destinations only, outside US will increase cost accordingly)</i>		ORDER TOTAL	

***Pair = one green and one red truck, not two of the same color*

Send check or money order to: **RPRU TOY, 1467 State Road JJ,
Stoutland, MO 65567**

NAME _____

PHONE (optional) _____

ADDRESS _____

CITY _____ STATE _____

ZIP CODE _____

Enjoy these pictures from some of the shows, the national auction, and the meeting at Andrew's house





311 S. Center Street
Shelbina, MO 63468